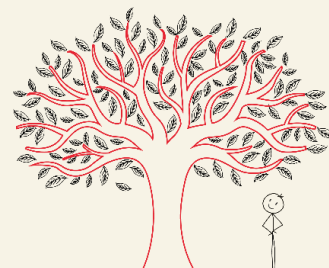


ODDO BHF Génération

Mutual Fund (FCP)

SEPTEMBRE 2019



All Cap European equities



Scale of risk and return*

Fund launched in

1996



MORNINGSTAR™¹

641 M€

under management²

Fund objectives


- The fund's objective is to outperform its benchmark** over an investment horizon of more than 5 years

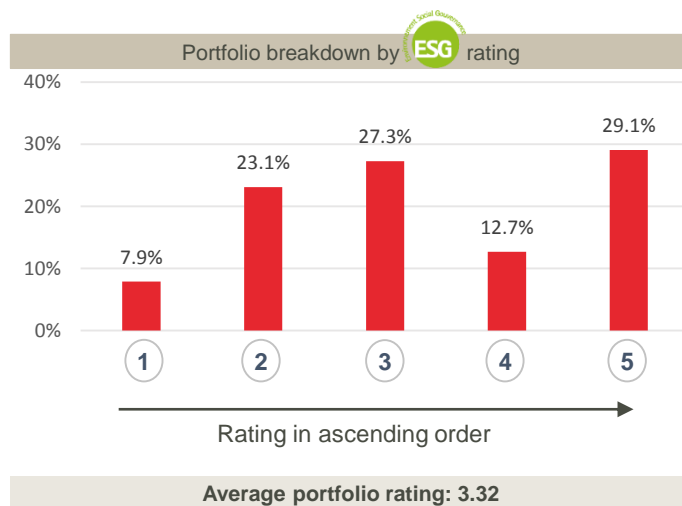
Management principles

2 filters to select best equities

- Shareholder stability and continuity: we select companies with a stable shareholder structure, which are owned for example, by families in a long term industrial perspective
- Quality of financial fundamentals

'Bottom up' construction of the portfolio

- Fundamental analysis and valuation
- Criteria:  analysis of the investment universe based on ESG criteria (Environmental, Social, Governance) with a focus on the management quality



Qualitative & quantitative filter of financial fundamentals



Return on capital employed

- ROCE above market average
- Or **big improvement in ROCE** on the cards



Cash flow & balance sheet

- Companies able to self-finance their growth (FCF>0)**
- Or improving free cash flow generation (**no financial risk**)



Scalability of business model

- European companies with a global dimension: **good geographical diversification** of economic risk

Risks

ODDO BHF Génération is mainly exposed to the following risks: **risk of capital loss, equity risk and a risk associated with discretionary management.** For more details about risks, please refer to the back of this document.

* Synthetic risk and return indicator: for low risk, potential return is lower, and for high risk, potential return is higher. The risk profile is not constant, and may change over time.

** Benchmark index: MSCI EMU Net Return EUR Index

¹ MorningStar Category: Eurozone Large-Cap Equity as of 30/08/2019; CR-EUR share | ² Source: ODDO BHF AM SAS. Data as of 30/08/2019



Risks

ODDO BHF Génération is mainly exposed to the following risks: risk of capital loss, equity risk, risk associated with small and mid caps, risk associated with discretionary management, interest rate risk, credit risk, counterparty risk, risk associated with commitments on forward financial instruments, currency risk, risks related to financing operations and collateral management and, on an ancillary basis emerging markets risk.

The investor is invited to read the Key Investor Information Document and the fund prospectus for detailed information concerning the risks to which the fund is exposed.

Portfolio Managers*

Emmanuel Chapuis, CFA

Co-Head of Fundamental Equities
ODDO BHF AM SAS
20 years investment experience

Guillaume Delorme, CFA

Analyst / Manager Large Caps and Family Companies
ODDO BHF AM SAS
12 years investment experience

François-Régis Breuil

Analyst / Manager Large Caps And Thematic Investments
ODDO BHF AM SAS
24 years investment experience

Javier Gomez Rodriguez

Analyst / Manager Large Caps and Family Companies
ODDO BHF AM SAS
10 years investment experience

* Current management team, liable to change

General Characteristics

Fund name	ODDO BHF Génération
Benchmark index	MSCI EMU Net Return EUR Index
Investment objective	The fund's objective is to outperform its benchmark, the MSCI EMU Net Return EUR Index, over an investment horizon of more than 5 years
Recommended investment horizon	5 years
Inception date	June 17 1996 (March 19 2008 conversion of the SICAV into an FCP)
Eligibility for the equity savings scheme PEA	Yes

Class of units	CR-EUR	DR-EUR
ISIN code	FR0010574434	FR0010576736
Currency	EUR	EUR
Dividend policy	Accumulation	Distribution
Minimum initial subscription	1 thousandth of a unit	1 thousandth of a unit
Subscription fees	Maximum 4%	Maximum 4%
Management fees	Maximum 2% (inclusive of tax) of the net assets excluding units and shares of UCITS	Maximum 2% (inclusive of tax) of the net assets excluding units and shares of UCITS
Redemption fees	None	
Performance fees	20% maximum inclusive of tax of the outperformance vs the benchmark, provided that the fund's performance is positive	
Transaction fees	Transaction fees, as defined in the prospectus, may be charged in addition to the fees described in the table.	

Structure and technical information

Legal structure	French Fonds Commun de Placement (FCP)
Investment management company	ODDO BHF Asset Management SAS
Custodian	ODDO BHF SCA
Subscriptions/redemptions	Daily at an unknown NAV until 11.15 a.m. CET
Valuation frequency	Daily

ODDO BHF AM is the asset management division of the ODDO BHF Group. It is the common brand of four legally separate asset management companies: ODDO BHF AM SAS (France), ODDO BHF PRIVATE EQUITY (France), ODDO BHF AM GmbH (Germany) and ODDO BHF AM Lux (Luxembourg).

This document has been drawn up by ODDO BHF ASSET MANAGEMENT SAS, for market communication. Its communication to any investor is the responsibility of each promoter, distributor or advisor.

Potential investors are invited to consult an investment advisor before subscribing to the fund regulated by the Autorité des Marchés Financiers (AMF). The investor is informed that the fund presents a risk of capital loss, but also many risks linked to the financial instruments/strategies in the portfolio. In case of subscription, investors must consult the Key Investor Information Document (KIID) and the fund's prospectus in order to acquaint themselves with the detailed nature of any risks incurred. The value of the investment may vary both upwards and downwards and may not be returned in full. The investment must be made in accordance with investors' investment objectives, their investment horizon and their capacity to deal with the risk arising from the transaction. ODDO BHF ASSET MANAGEMENT SAS cannot be held responsible for any direct or indirect damages resulting from the use of this document or the information contained in it. This information is provided for indicative purposes and may be modified at any moment without prior notice.

Investors are reminded that past performance is not a reliable indication of future returns and is not constant over time. Performance are presented net of fees except the potential subscription fee charged by the distributor and the local taxes. Any opinions presented in this document result from our market forecasts on the publication date. They are subject to change according to market conditions and ODDO BHF ASSET MANAGEMENT SAS shall not in any case be held contractually liable for them. The net asset values presented in this document are provided for indicative purposes only. Only the net asset value marked on the transaction statement and the securities account statement is authoritative. Subscriptions and redemptions of mutual funds are processed at an unknown asset value.

The Key Investor Information Document (DEU, ENG, FR, AUT, ITL, NLD, POR, SWD, LUX, FIN, BLG, AUT, CHE) and the prospectus (DEU, ENG, FR, AUT, ITL, NLD, POR, SWE, CHE) are available free of charge from ODDO BHF ASSET MANAGEMENT SAS or at am.oddo-bhf.com or at authorized distributors. The annual and interim reports are available free of charge from ODDO BHF ASSET MANAGEMENT SAS or on its internet site am.oddo-bhf.com

From January 3, 2018, when ODDO BHF ASSET MANAGEMENT provides investment advisory services, please note that it's always on a non-independent basis pursuant to the European Directive 2014/65/EU (so-called "MIFID II Directive"). Please also note that all recommendations made by ODDO BHF ASSET MANAGEMENT are always provided for diversification purposes. The fund is licensed for sale in Switzerland. The Key Investor Information Document, the prospectus, the annual and interim reports for Switzerland can be obtained free of charge from the Swiss Representative and paying agent, RBC INVESTOR SERVICES BANK, succursale de Zürich, Bleicherweg 7, 8027 Zürich, Switzerland.

ODDO BHF Asset Management SAS (France)

Portfolio management company approved by the Autorité des Marchés Financiers under GP 99011.

Société par actions simplifiée with capital of €9,500,000. Trade Register (RCS) 340 902 857 Paris.

12 boulevard de la Madeleine – 75440 Paris Cedex 09 France – Phone : 33 (0)1 44 51 85 00

am.oddo-bhf.com