



ODDO BHF  
ASSET MANAGEMENT

# ODDO BHF ARTIFICIAL INTELLIGENCE

## *Participate in the AI revolution*

JANUARY 2024

Launched in

2018

Assets under management

\$ 372M

A GLOBAL FUND INVESTED IN EQUITIES THAT BENEFIT FROM ARTIFICIAL INTELLIGENCE, ACROSS A VARIETY OF SECTORS

- One of the **pioneer funds** in the Artificial Intelligence (AI) thematic landscape: launch in 2018
- A truly **diversified fund**: invested, far beyond Tech, in a broad range of sectors that will leverage AI to develop new products and services, according to us
- A robust SFDR<sup>(1)</sup> article 9 strategy, based on **decarbonization**
- “Using AI to invest in AI”: ODDO BHF Artificial Intelligence aims to leverage the analytical power of AI
- The Fund may **invest up to 50%** of its net assets in equities whose registered office is located in non-OECD countries



SOFTWARE



HARDWARE



INTERNET MEDIA



HEALTHCARE



CYCLICAL AI

### CHARACTERISTICS OF THE FUND

Fonds	SFDR classification <sup>(1)</sup>			Summary risk indicator <sup>(2)</sup>	NAV <sup>(3)</sup>	Morningstar YTD <sup>(4)</sup>
ODDO BHF Artificial Intelligence	6	8	9	①②③④⑤⑥⑦	169.47€	Q2

**Main Risks:** ODDO BHF Artificial Intelligence is principally exposed to the following risks: **risk of capital loss, equity risk, mid-cap holding risk, volatility risk, liquidity risk of underlying assets, modelling risk and currency risk.** For more details about risks, please refer to page 5 of this document.

<sup>1</sup> The EU Sustainable Finance Disclosure Regulation (SFDR) is a set of EU rules which aim to make the sustainability profile of funds transparent, more comparable and better understood by end investors. Article 6: The management team does not consider sustainability risks or adverse effects of investment decisions on sustainability factors in the investment decision making process. Article 8: The management team addresses sustainability risks by integrating ESG criteria (Environment and/or Social and/or Governance) into its investment decision making process. Article 9: The management team follows a strict sustainable investment objective that significantly contributes to the challenges of the ecological transition, and addresses Sustainability Risks through ratings provided by the Management Company's external ESG data provider. | <sup>2</sup> The summary risk indicator (SRI) is a guide to the level of risk of this product compared to other products. It shows how likely it is that the product will lose money because of movements in the markets or because we are not able to pay you. It scales in a range from 1 (lowest risk) to 7 (highest risk). The lowest category does not mean a risk-free investment. This indicator is not constant and is updated if the risk profile of the fund changes over time. Historical data, such as is used to calculate the risk indicator, may not be a reliable indication of the future risk profile of the Fund. There is no guarantee that the management objectives in terms of risk will actually be met. The risk indicator assumes you keep the product until the end of the recommended holding period. The actual risk can vary! significantly if you cash in at an early stage and you may get back less. | <sup>3</sup> CR-EUR share class | <sup>4</sup> Morningstar quartile of CR-EUR share class in category "Sector Equity Technology"  
Source: ODDO BHF AM SAS | Data as of 31/12/2023

# AI IS A REVOLUTION *reshaping every industry*

## A POWERFUL TREND

- AI, the ability of a program or machine to think & learn like a human, now allows for **large productivity increases**, regardless of companies' size, sector and geography, according to our analysis
- **Adoption speed** is thus set to significantly accelerate, from Tech companies firstly to then entertainment, media and pharma, in our opinion

**+35.4%\*\***

is the expected **annual growth rate 2019-2026** of AI, while the global technology industry is expected to grow by only 10%\*\*\*.



"In my lifetime, I've seen two demonstrations of technology that struck me as revolutionary.

The first time was in 1980, when I was introduced to a graphical user interface - the forerunner of every modern operating system, including Windows.

The second big surprise came just last year [...] meeting with the team from OpenAI."

Bill Gates - March 21<sup>st</sup>, 2023

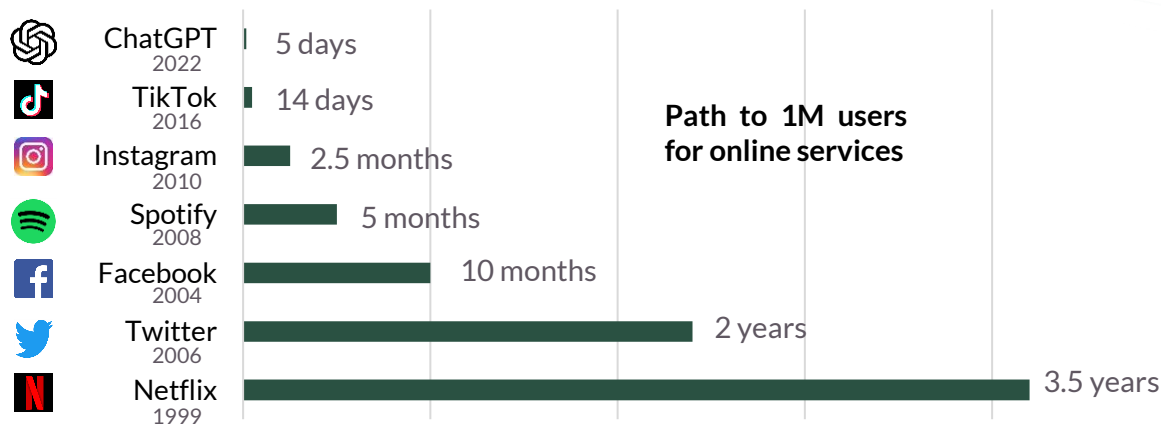
## ARTIFICIAL INTELLIGENCE, GETTING CLOSER TO ITS "IPHONE MOMENT"

### ChatGPT bringing AI to the next level

- Easy access
- Interaction in human language
- Very quickly evolving technology
- Virtually unlimited number of applications
- Every industry can use it

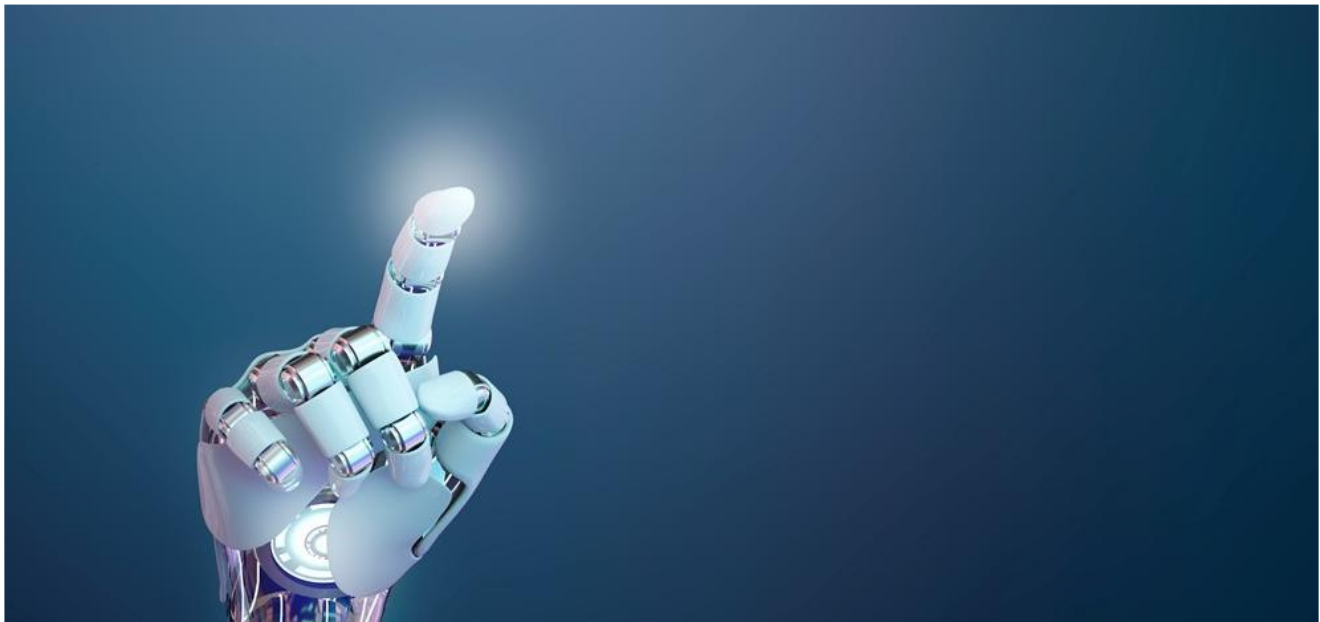
### Unprecedented speed of mass adoption

- **For everyone:** no need to be an IT expert any longer to access an Artificial Intelligence
- **Multi-modality:** Inputs & Outputs can be plain text, video, sound, picture, etc.
- AI becomes **more affordable and higher performing**



**The fund is exposed to a risk of capital loss. Those companies are no investment recommendations**

Source: ODDO BHF AM SAS, \*\*PWC 2021, \*\*\*Gartner 2018, GatesNotes "The Age of AI has begun", Statista, BofA Global Research, McKinsey, NextBigFuture, Gartner | Data as of 2023



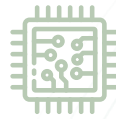
# ODDO BHF ARTIFICIAL INTELLIGENCE

The fund offers our clients direct exposure to high-growth sub-themes encompassing all aspects of the artificial intelligence theme



## SOFTWARE

- Cyber Security
- Analytics software
- Cloud software
- SaaS Management software



## HARDWARE

- 5G Value chain
- Internet of Things
- Sensors
- AI Processing



## INTERNET MEDIA

- Social Network
- Online retail & marketplace
- Internet App
- Video communication



## HEALTHCARE

- Biopharma
- Medtech
- Tests & Diagnostics
- Genome editing



## CYCLICAL AI

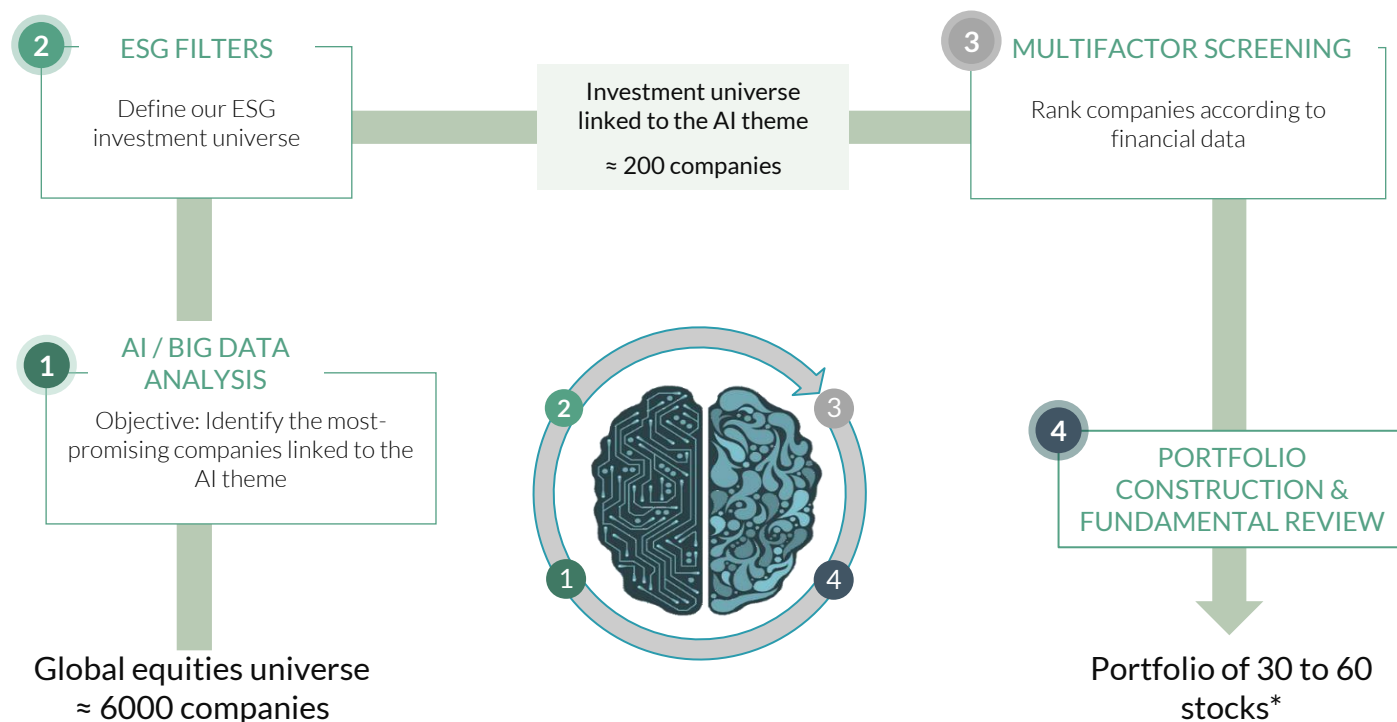
- Banks
- Insurance
- Industrials
- Logistics

**The fund is exposed to a risk of capital loss. These sector examples are not investment recommendations.**

Source: ODDO BHF AM SAS

# HUMAN EXPERTISE ENHANCED BY *Artificial Intelligence*

OBJECTIVE: INVEST IN THE BEST GLOBAL LISTED EQUITIES LINKED TO THE THEME



## *A dedicated* MANAGEMENT TEAM\*



22

**Brice Prunas**  
Equity Fund Manager  
ODDO BHF Artificial Intelligence  
ODDO BHF AM SAS



8

**Maxence Radjabi, CFA**  
Equity Fund Manager  
ODDO BHF Artificial Intelligence  
ODDO BHF AM SAS

● Years of investment experience

\* Current Management team, subject to change.

**The fund is exposed to a risk of capital loss.**

Source: ODDO BHF AM SAS | \* the portfolio consists of 54 stocks as of 31/12/2023



# WHY *invest* IN ODDO BHF ARTIFICIAL INTELLIGENCE ACCORDING TO US ?

## FUNDAMENTAL EXPERTISE OF THE PORTFOLIO MANAGERS ENHANCED BY AI

- Stable team of experienced PMs managing our AI strategy since 2018, i. e. far before ChatGPT became fashionable
- Fundamental analysis, ESG criteria and valuation at heart of the investment process
- AI tool as an additional support for portfolio managers

## SUPPORT THE DECARBONIZATION OF THE ECONOMY

- A sustainable approach based on strong financial, thematic and ESG analysis
- An Article 9 fund with explicit decarbonization strategy, goals and KPIs

## EXPLOITING UNSTRUCTURED DATA WITH AI

- Harnessing the analytical power of AI to go through millions of documents, interviews or reports published anywhere on the planet
- Aiming to detect early the relevant stocks globally
- Including small, young, poorly-covered and/or transitioning companies, regardless of home country

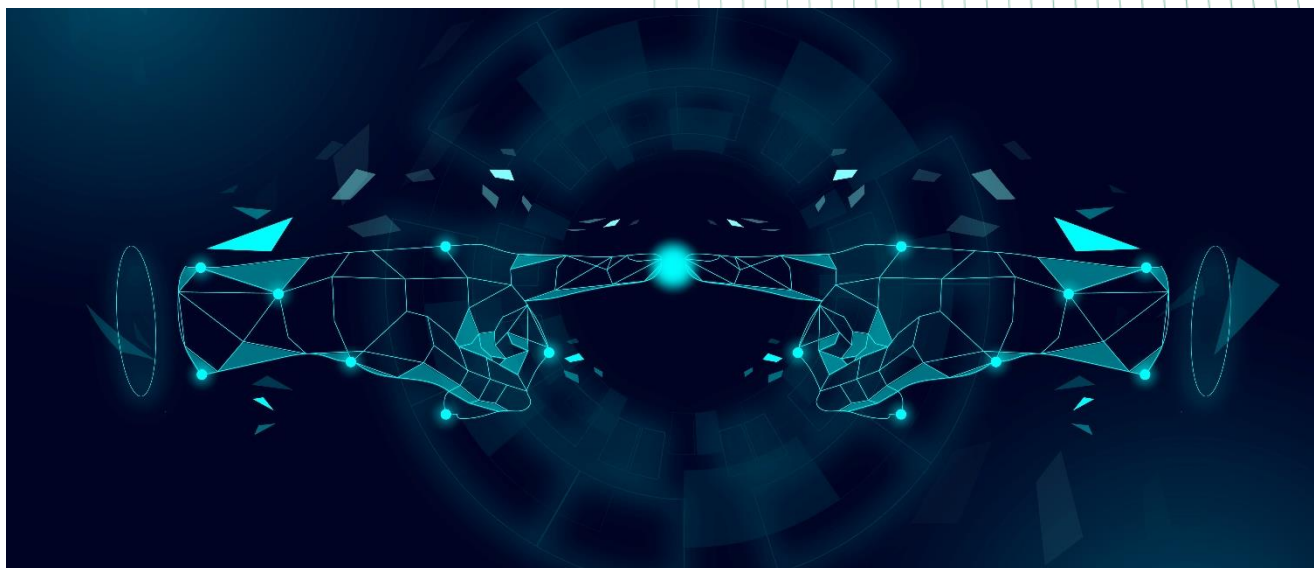
## BROADLY DIVERSIFIED PORTFOLIO

- Direct exposure to Tech sub-segments most relevant for AI: software, hardware, Internet, Semiconductors, etc.
- Also invested in non-Tech sectors & stocks benefitting from AI: Life Science, Media, Healthcare, Finance, etc.

## RISKS

ODDO BHF Artificial Intelligence is mainly exposed to the following risks: **Capital loss risk, equity risk, mid-cap holding risk, interest rate risk, credit risk, discretionary management risk, volatility risk, counterparty risk, liquidity risk of underlying assets, modelling risk, risk related to commitments on forward financial instruments, currency risk, emerging market risk, investment risk in China, stock connect, bond connect and sustainability risk.**

The investor is invited to read the Key Information Document and the fund prospectus for detailed information concerning the risks to which the fund is exposed.



# General characteristics

Fund name	ODDO BHF Artificial Intelligence	
Benchmark index	MSCI World NR USD	
Investment objective	Generate capital growth by investing in listed international equities that are exposed to the global trend of "artificial intelligence".	
Recommended investment horizon	5 years	
Inception date	19/12/2028	
Eligibility for the equity savings scheme PEA	No	
Class of units	CR-EUR	Clw-USD
ISIN code	LU1919842267	LU1833933325
Currency	EUR	USD
Dividend policy	Accumulation	Accumulation
Minimum initial subscription	EUR 100	USD 250,000
Subscription fees	5% maximum	2% maximum
Management fees	Up to 1.6% of the net assets	Up to 0.95% of the net assets
Redemption fees	None	0.5% (maximum)
Performance fees	A maximum of 20% of the Fund's outperformance relative to the benchmark index provided that the Fund's performance is positive.	None
Structure and technical information		
Legal structure	SICAV	
Investment management company	ODDO BHF Asset Management SAS	
Custodian	Caceis Bank Luxembourg (Luxembourg)	
Subscription / redemption	Daily at unknown price until 12:00 p.m. (noon)	
Valuation frequency	Daily	
Authorised for distribution	France, Italy, Germany, Switzerland, Spain, Luxembourg, Sweden, Finland, Norway, Portugal, Belgium, Austria	

ODDO BHF AM is the asset management division of the ODDO BHF Group. It is the common brand of three legally separate asset management companies: ODDO BHF AM SAS (France), ODDO BHF AM GmbH (Germany) and ODDO BHF AM Lux (Luxembourg).

This document has been drawn up by ODDO BHF ASSET MANAGEMENT SAS. for market communication. Its communication to any investor is the exclusive responsibility of each distributor or advisor with the exception of Belgium, where this document is intended exclusively for distributors and may not be distributed to non-professional clients.

**Potential investors should consult an investment advisor before subscribing to the fund. The investor is informed that the fund presents a risk of capital loss, but also many risks linked to the financial instruments/strategies in the portfolio. In case of subscription, investors must read the Key Information Document (KID) and the fund's prospectus in order to acquaint themselves with the detailed nature of any risks incurred and all costs.** The value of the investment may vary both upwards and downwards and may not be returned in full. The investment must be made in accordance with investors' investment objectives, their investment horizon and their capacity to deal with the risk arising from the transaction. ODDO BHF ASSET MANAGEMENT SAS cannot be held responsible for any direct or indirect damages resulting from the use of this document or the information contained in it. This information is provided for indicative purposes and may be modified at any moment without prior notice.

Any opinions presented in this document result from our market forecasts on the publication date. They are subject to change according to market conditions and ODDO BHF ASSET MANAGEMENT SAS shall not in any case be held contractually liable for them. The net asset values presented in this document are provided for indicative purposes only. Only the net asset value marked on the transaction statement and the securities account statement is authoritative. Subscriptions and redemptions of mutual funds are processed at an unknown asset value.

A summary of investor rights is available free of charge in electronic form in English language on the website at :

[https://am.oddo-bhf.com/FRANCE/en/non\\_professional\\_investor/infos\\_reglementaire](https://am.oddo-bhf.com/FRANCE/en/non_professional_investor/infos_reglementaire)

The fund may have been authorized for distribution in different EU member states. Investors are advised to the fact that the management company may decide to withdraw with the arrangements it has made for the distribution of the units of the fund in accordance with Article 93a of Directive 2009/65/EC and Article 32a of Directive 2011/61/EU.

The complaints handling policy is available on our website [am.oddo-bhf.com](http://am.oddo-bhf.com) in the regulatory information section. Customer complaints can be addressed in the first instance to the following e-mail address: [service\\_client@oddo-bhf.com](mailto:service_client@oddo-bhf.com) (or directly to the Consumer Mediation Service: <http://mediationconsommateur.be> (ONLY FOR BELGIUM)).

The Key Information Document (French, English, Italian, German, Spanish, Portuguese, Swedish, Norwegian, Finnish) and the prospectus (French, German, English) are available free of charge from ODDO BHF ASSET MANAGEMENT SAS or at [am.oddo-bhf.com](http://am.oddo-bhf.com) or at authorized distributors. The annual and interim reports are available free of charge from ODDO BHF ASSET MANAGEMENT SAS or on its internet site [am.oddo-bhf.com](http://am.oddo-bhf.com). The fund is licensed for sale in Switzerland. The Key Information Document, the prospectus, the annual and interim reports for Switzerland can be obtained free of charge from the Swiss Representative and paying agent, BNP Paribas Securities Services, succursale de Zurich, Selnaustrasse 16, 8002 Zurich, Switzerland.

## ODDO BHF Asset Management SAS (France)

Portfolio management company approved by the Autorité des Marchés Financiers under GP 99011.

Société par actions simplifiée with capital of € 21,500,000. Trade Register (RCS) 340 902 857 Paris.

12 boulevard de la Madeleine · 75440 Paris Cedex 09 France · Phone: +33 (0)1 44 51 85 00 · [www.am.oddo-bhf.com](http://www.am.oddo-bhf.com)